



The “Job” Talk

Lynn Stevens

Director of Workforce Development
Goodwill Industries of North Louisiana

what **do** i do?

Disability Statistics



- 61 million adult Americans or 26% of the population have some form of disability – that's 1 in 4 Americans who face daily challenges.
 - Between three and five people out of every 100,000 have FSHD.
- The highest percentage of the disabled comes from the South.
- 13.7% of disabled Americans are challenged in terms of mobility, followed by cognition disability (10.8%).

Disability Statistics

- There are about 7.1 million disabled students in the US
- 15% of people worldwide have some form of disability – 1% is intellectually disabled
- Social security beneficiaries received an increase in monthly checks of 1.3% for 2021 ~ Average monthly benefit \$1,277
- In Massachusetts, 98.3% of people with disabilities have health insurance.
- 89.6% of people with disabilities have health insurance, compared to 86.9% of people with no disabilities.
- Only 46% of people with disabilities have private health insurance, compared to 75.8% of people with no disabilities.



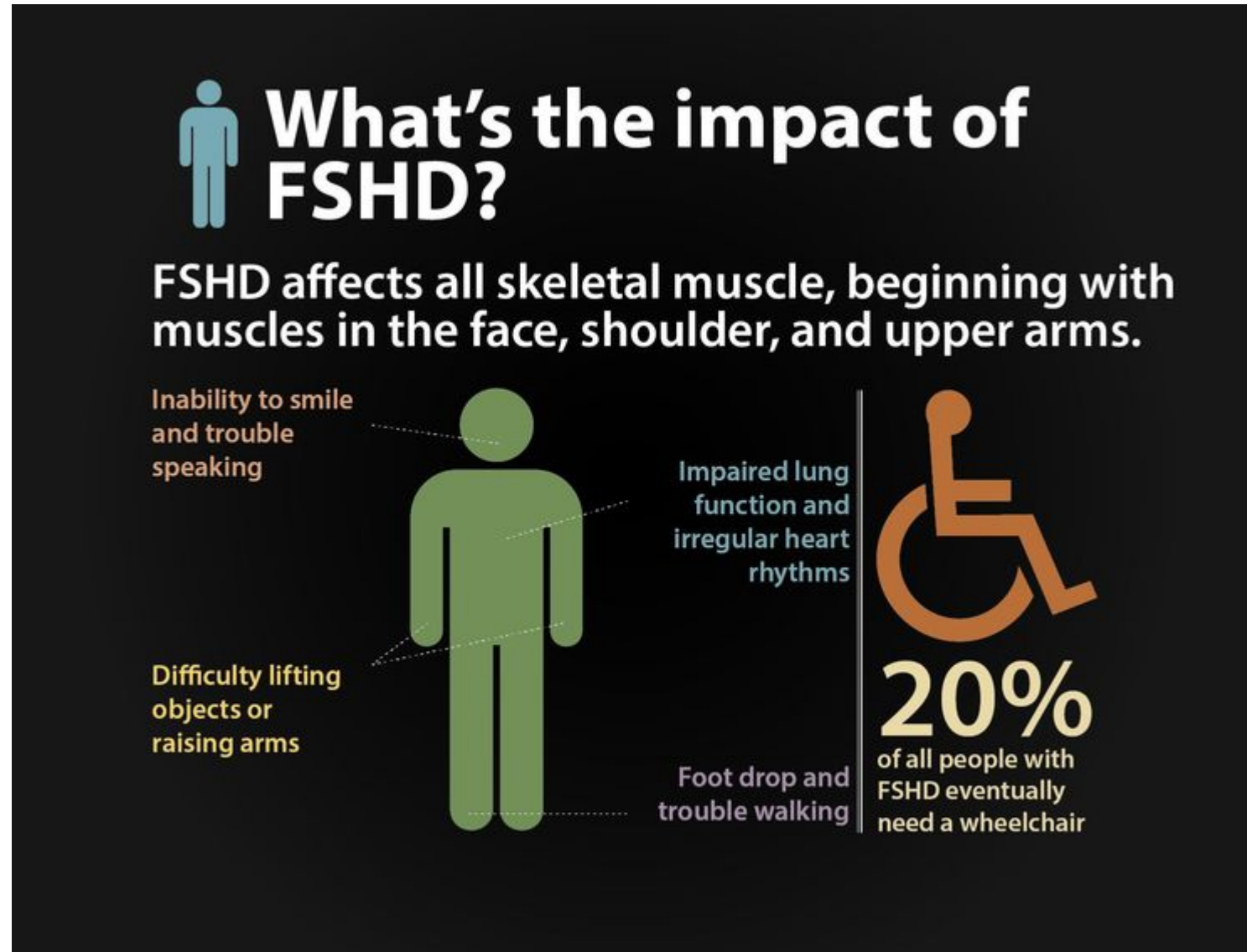
Disability Statistics

- 1 million workers with disabilities (22.5% of men and 16.5% of women) have lost their job since the beginning of the pandemic (March 2020).
- Ages:
 - 10.4% - 20 and 24
 - 43.5% - 25 to 34 years old
 - 38.5% - 35 to 44 years old
 - 7.6% - over 65 years of age
- Race:
 - 51.8% - Black and African Americans
 - 8.6% - Hispanic or Latino
 - 6.7% - Asian
 - 32.9% - Caucasian
- The unemployment rate for those with disabilities is nearly double to those without a disability



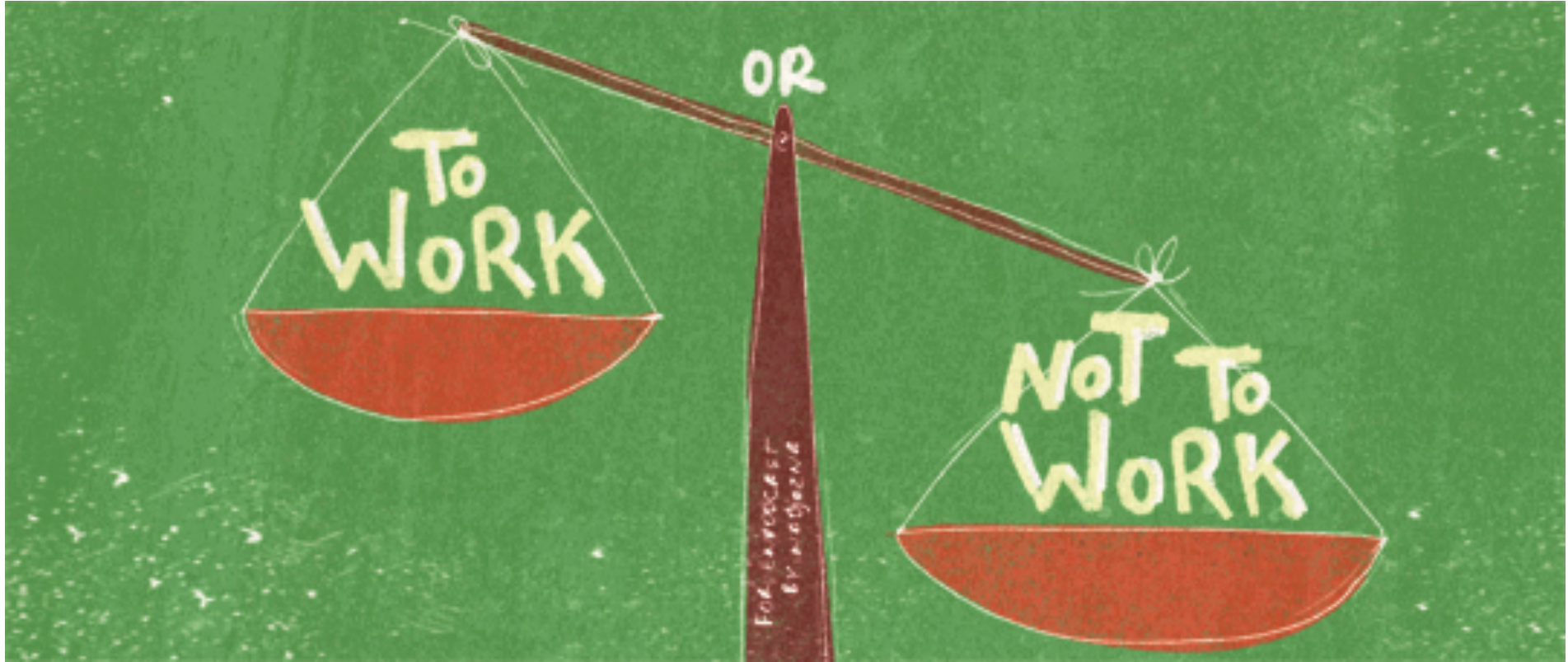
FSHD Statistics

- In around 90% of FSHD patients, symptoms usually begin before age 20.
- Earliest symptom - facial weakness > most common in childhood.



so why am i

HERE?

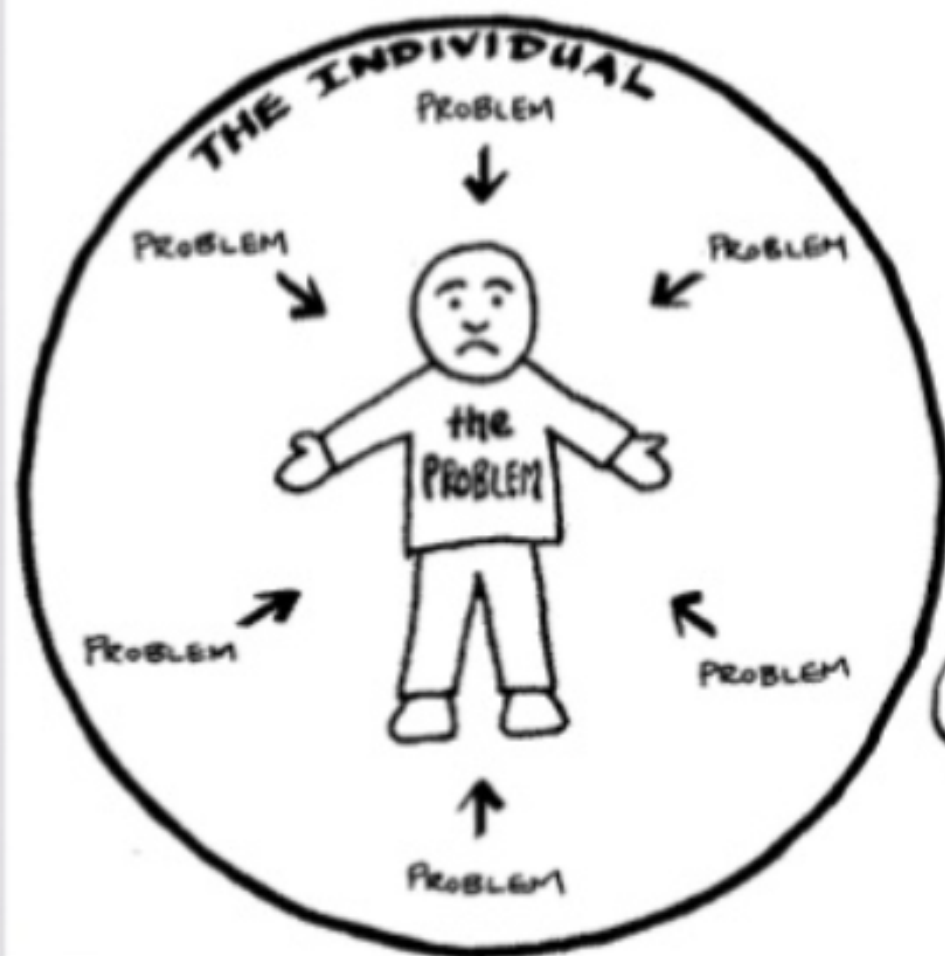


Choices.....

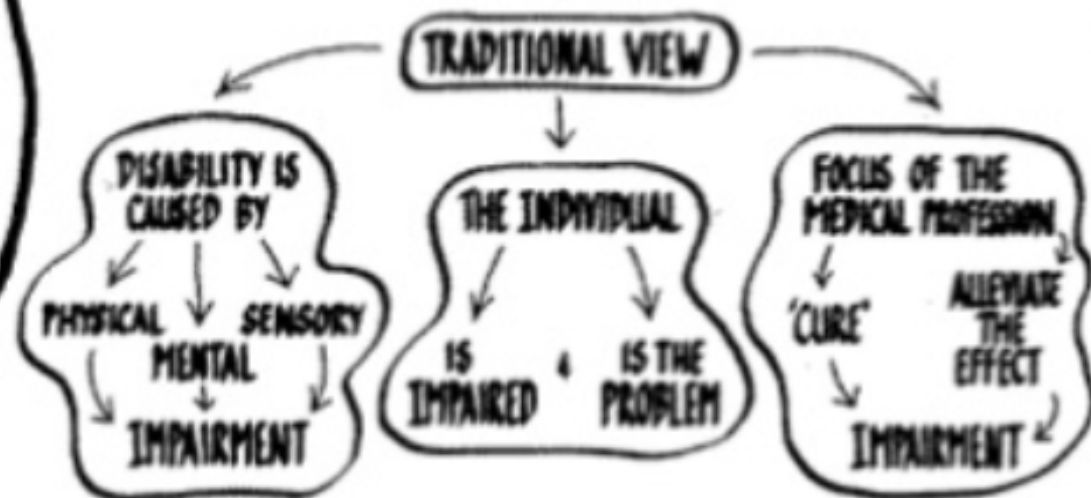
1. Unemployed > Find a Job (Full Time/Part Time)
2. Employed > Continue Working, Reduce Hours, Find a New Job (Full Time/Part Time), Quit
 - Reduced Hours / Quit = File for Disability/Unemployment
3. Go Back to School
4. Volunteer
5. ??????



THE MEDICAL MODEL OF DISABILITY



IMPAIRMENTS AND CHRONIC ILLNESS
OFTEN POSE REAL DIFFICULTIES BUT
- THEY ARE NOT THE MAIN PROBLEMS



Disability Fallacies

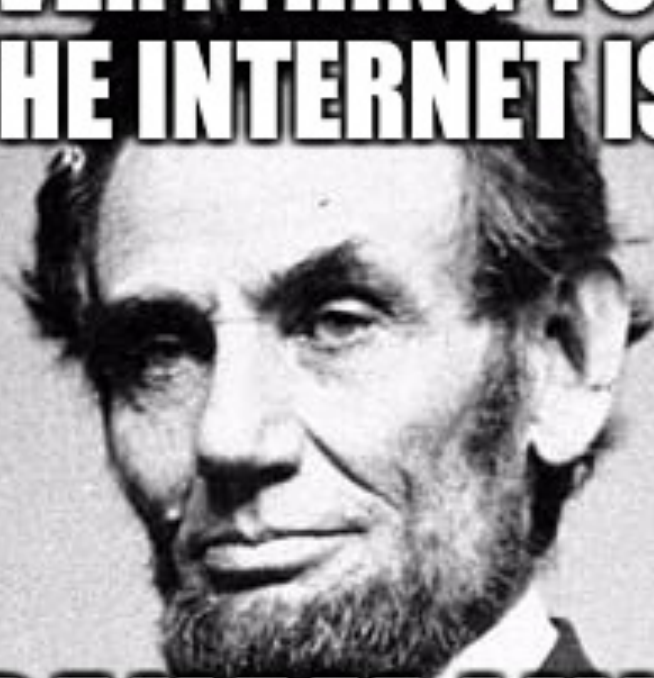


- Individuals demand unreasonable/too costly
- Disabled individuals would rather live off the government than work
- Disabled individuals that work miss a lot of time off
- Disabled individuals are looking to sue their employer for saying or doing the wrong thing
- Those with mental disabilities might “go postal”
- Stay on the job forever because they are grateful to have a job
- Require too much training
- Disabled makes the non-disabled uncomfortable
- Will increase the company’s worker’s compensation insurance costs
- Disabled individuals have a hard time getting to work

A zoo in Japan once spent four years trying to mate a pair of hyenas before realizing they were both males, due to how similar a female pseudo penis is to a real one.



**NOT EVERYTHING YOU READ
ON THE INTERNET IS TRUE**




-ABRAHAM LINCOLN

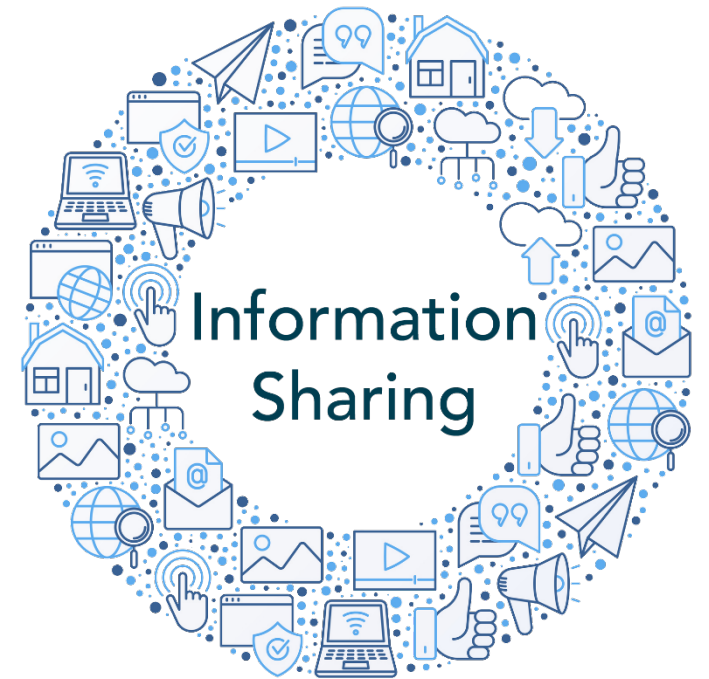
Americans with Disability Act (ADA)



- Passed in 1990; Amended in 2008
- Includes both mental and physical medical conditions
- Four goals:
 - Provide a national mandate to eliminate discrimination against those with “disabilities”
 - Provide enforceable standard addressing discrimination
 - Ensure the federal government will play a central role in enforcing those standards
 - Involve Congressional authority in order to address major areas of discrimination faced by those with “disabilities”

Understand the Facts....

- 58% - Workers with disabilities found it difficult to get an interview
 - 57% - Requested flexible hours
 - 35% - Stated they have been harassed by a boss
 - 25% - Need adapted equipment or technology
 - 15% - Need adaptation of building or work space
- 



Resources to Help Find Employment

1. State Departments of Labor www.dol.gov/agencies/whd/state/contacts
 - a. State Vocational Rehabilitation Programs <http://parac.org/svrp.html>
 - b. State Governors' Offices on Employment of People with Disabilities
<https://www.dol.gov/odep/contact/state.htm>
 - c. Independent Living Centers www.ilru.org/projects/cil-net/cil-center-and-association-directory
2. American Job Centers
www.careeronestop.org/localhelp/americanjobcenters/find-american-job-centers.aspx
3. Ability One www.abilityone.gov/abilityone_network/employment.html
4. Ticket to Work <https://choosework.ssa.gov>
5. Goodwill Industries International www.goodwill.org/jobs-training
6. The ARC
7. EARN



Assistive Devices

- **Mobility Aids**
- **Grab Bars, Ramps, Wider Doors**
- **Ergonomic Keyboards/Mouse**
- **Screen Readers and Magnifiers**
- **Pencil Grips**
- **Voice recognition software**
- **Screen clips, page turners, book holders**
- **Microphone/Telephone Headsets**
- **Smart Home Assistants**
- **Environmental Control Devices**
- **Emergency Response System**
- **Cleaning Robot/Roomba**
- **Adaptive Switches**
- **Software (Mouse4All)**
- **Smart Watches**



What about those odd jobs?

- Hand tools such as hammers, wrenches, screwdrivers and tire gauges now available. Some even have voice output.
- Outdoor mobility aids designed for rugged terrain - essential in agricultural or nature setting.
- Lift and hand control modifications are now common for people with lower limb disabilities.



Important Things to Remember When Considering Employment

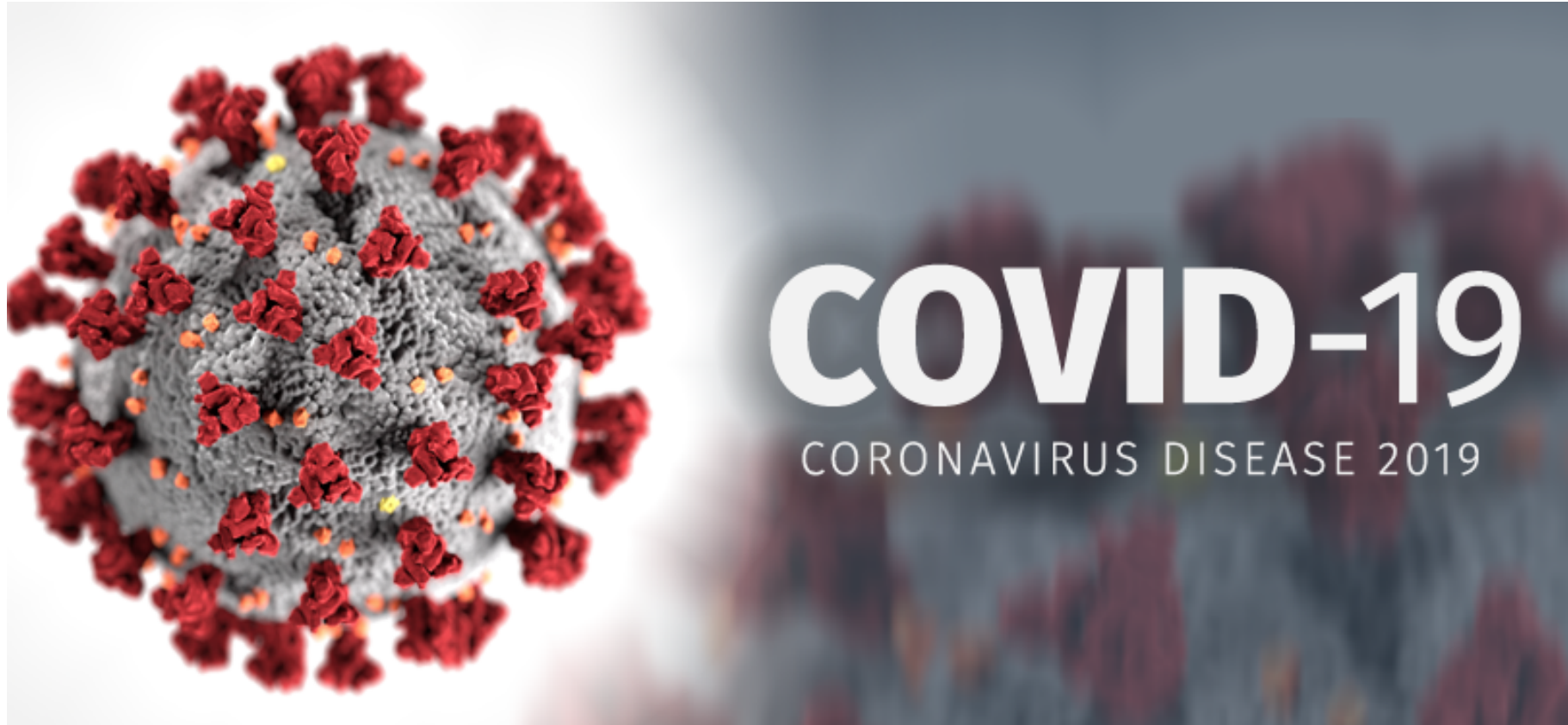
- Transportation
 - Steering Wheel Modifications
 - Hand Controls (Wheel, Joystick)
 - Lifts and Hoists
- Job Descriptions
- Work Environment
- Become an Expert
- Be Honest with Employer
- Know When to Ask for Assistance



Other Things to Consider in Making the Tough Choice



- 64% of people who apply for benefits get rejected at the beginning of the application process.
- More than 85% of applicants are rejected when they file for reconsideration, according to disability appeals council statistics.
- Kansas has the highest approval rating 69.7%, followed by New Hampshire 66.1%, Wyoming 60.3%, Alaska 59.9%, Nebraska 57.4%.
- Oklahoma has the lowest approval rating 33.4%, followed by Arizona 37.1%, Mississippi 38.5%, Texas 39.0% and Florida 39.1%.
- Average time of consideration for SSDI benefits 12+ months
- Health Coverage



Alabama; Arizona; Arkansas; Georgia; Idaho; Iowa; Mississippi; Missouri; Montana; North Dakota; Ohio; South Carolina; South Dakota; Tennessee; Utah; Wyoming.

**YOUR
CHOICE...**





Lynn Stevens
Director of Workforce Development
Goodwill Industries of North Louisiana
318-771-1929
lstevens@goodwillnla.org

Facebook: www.facebook.com/lns35/
Instagram: www.instagram.com/lynnstevens35/
Linked In: www.linkedin.com/in/lynn-stevens-0589285/
Twitter: @lynnstevens35